

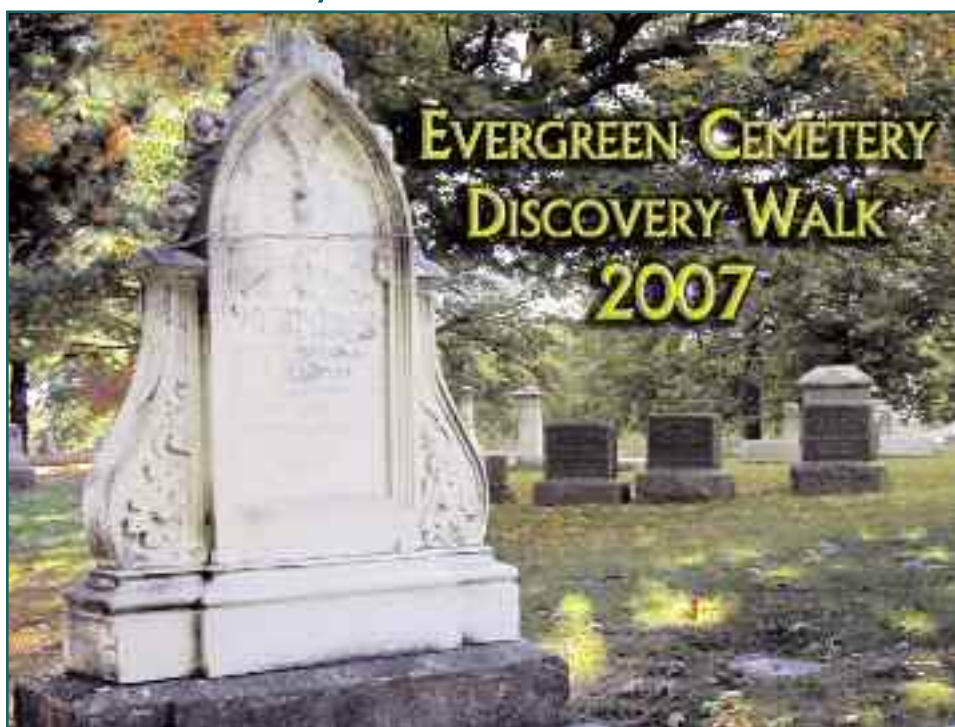
# On The Square

The Quarterly Newsletter for the  
McLean County Museum of History

Volume 39, Number 3

September, October, November 2007

## Discovery Walk: ISU Edition is Lucky Thirteen



museum members, \$4.00 for kids & students w/ID. A special \$2.00 pre-sale discount is available for general and museum member tickets if purchased before September 29. Also, for the convenience of ISU students, faculty and staff, tickets will be available through the Bone Student Center box office at the same price! Call 309/827-0428 or visit [www.mchistory.org](http://www.mchistory.org) for details.

### 2007 FEATURED CHARACTERS

Henry McCormick  
Elizabeth Mitchell Christian and  
Flora Pennell Dodge  
Mary J. Hartmann  
Angeline Vernon Milner  
Carter Harris  
June Rose Colby  
Edwin Crawford Hewett  
Jesse Fell and Edwin W. Bakewell

The *Evergreen Cemetery Discovery Walk* is the Museum's most successful, longest running public program, and you're invited! This time, we celebrate the 150th anniversary of the founding of Illinois State University with a special group of characters, all from ISU's rich past.

Generously sponsored by Busey Bank, *Voices from the Past XIII* combines historical research by Museum volunteers, costumed actors from Illinois Voices Theatre and the beautiful grounds of Evergreen Memorial Cemetery into a week-long outdoor theatrical presentation. Ten characters will share the rich and diverse stories of the university's past in eight presentations over a one mile walk through the hallowed grounds of the city's oldest cemetery. Themes explored will include service to the community, leadership, coping with tragedy, personal integrity and convictions and cultural diversity.

Tours will be held at 11:00 a.m. and 2:00 p.m. on each of the following days: Saturday, September 29, Sunday, September 30, Saturday, October 6 and Sunday, October 7, 2007. Ticket sales begin September 4, 2007 and will be available for purchase at the Museum, the Garlic Press in Normal, and online at [www.mchistory.org](http://www.mchistory.org). Price categories are: \$14.00 for the general public, \$12.00 for

### Inside this issue:

District 87 & Museum Celebration . . .	2
Laura Wheaton Reception . . . . .	2
James Loewen Featured Speaker . . . . .	3
Volunteer Director Leads Conference Session . . .	3
Achieve Tax Savings . . . . .	4
Focus on Volunteers . . . . .	5
New Interns & New Projects . . . . .	6-7
Museum Hosts Citizenship Ceremony . . .	8-9
Corporate Relations . . . . .	7
Calendar of Events . . . . .	10-11
Utah Phillips Returns . . . . .	12
Museum Girl Scout Camp . . . . .	12
Staff Profile - Terri Clemens . . . . .	13
New to the Collection . . . . .	14-15
Mystery History Quiz . . . . .	16

# On The Square Quarterly Newsletter

Volume 39, Number 3, 2007



Edited by  
**Susan Hartzold**  
**Bill LaBounty**  
**Laura Wheaton**

## McLean County Museum of History

200 N. Main St., Bloomington, IL 61701  
Phone (309) 827-0428 Fax (309) 827-0100  
[www.McHistory.org](http://www.McHistory.org)

### HOURS

Mon., Wed., Thur., Fri. & Sat. 10 a.m.-5 p.m.  
Tuesday 10 a.m.-9 p.m.  
Sunday (Sept.-May) 1 p.m.-5 p.m.

### STAFF

Greg Koos, Executive Director  
Susan Hartzold, Curator of Collections and Exhibits  
Laura Wheaton, Director of Education  
Mary Anne Schierman, Dir. of Volunteers and Interns  
Bill Kemp, Librarian/Archivist  
Scott Callan, Manager of Development Operations  
Jeff Woodard, Dir. of Marketing & Comm. Affairs  
George Perkins, Assistant Librarian/Archivist  
Terri Clemens, Registrar  
Candace Summers, Education Program Coordinator  
Kay Abbott, Office Manager  
Harlan Fuller, Bookkeeper  
Betty Turchirollo, Volunteer Assistant  
Trisha Wood, Weekend Coordinator

### OFFICERS

Michael G. Matejka, President  
Robert Watkins, First Vice President  
Mark Dunn, Second Vice President  
Nancy Froelich, Secretary  
Peter Borowski, Treasurer  
Carol Struck, Immediate Past President

### DIRECTORS

Craig Alexander	Russel Francois
Carl Behr	Mark Gibson
John Bowles III	Sandra Harmon
Al Bowman	John B. Meek
Roger Bridges	Pam Muirhead
Willie Brown	Benjamin Rhodes
Fred Dolan	Mike Sweeney
David Dorris	Richard Wilson
Rob Fazzini	Carolyn Yockey

### PAST PRESIDENTS

David Ashbrook	Don Skaggs
Fred Dolan	Steve Wannemacher
Edward B. Jelks	Chuck Wright
Benjamin J. Rhodes	Carol Struck
Wayne Rogers	

### DIRECTORS EMERITI

Barbara Allsup	James A. Stahly
David Ashbrook	Steve Wannemacher
Maryfern Bartrum	Lloyd Watkins
Edward B. Jelks	Chuck Wright
Davis Merwin	

## Museum Joins District 87 in Sesquicentennial Celebration

The 2007-2008 school year marks the 150th Anniversary of Bloomington Public Schools, and the year will be filled with events commemorating the founders, celebrating the present, and focusing on future goals. During September and October, historical artifacts pertaining to Bloomington Public Schools will be on display on the first floor of the Museum. Dan Leifel, former Board of Education president and principal author of the District 87 Sesquicentennial Book, will present "Highlights," interesting historical anecdotes gleaned from his research on September 11, 2007 at 7:00 p.m.

### Our First Day of School

*On the morning of September 23, 1857, Bloomington High School officially opened its door for its first group of students. Classes were held on the top floor of the Wilkins Academy, located on the corner of Main and Olive Streets. Under the supervision of Principal J. A. Johnson, subjects taught included English, Latin grammar, arithmetic, algebra and Parker's philosophy. This building was used for just one year, as BHS moved to the basement of the Christian Church the following fall...*

Excerpt from the District 87  
Sesquicentennial Book

The schedule of events includes:

- 9/11 Dan Leifel's program at the Museum (7pm)
- 9/23 Community-wide parade (2pm) and Official Opening Ceremonies (3pm)
- 10/1-5 Education Week for District 87
- 10/5 District 87 Sesquicentennial Book - signing at Barnes and Noble (7-8pm)

For inquiries regarding the book, contact [Sesquibook@district87.org](mailto:Sesquibook@district87.org), or call (309)663-1701. For a comprehensive look at pictures and text about interesting facts of Bloomington School history, visit the school district website at <http://www.district87.org/sesqui>.

## Reception Planned for Departing Director of Education

All Society members and volunteers are invited to a special reception for Laura Wheaton from 4-6pm on Wednesday, September 12 at the Museum. Laura has served as Director of Education for the last 8 + years. She is headed to Louisville, Kentucky in mid-September, where she will become the Manager of Learning and Community Outreach at the Frazier International History Museum.

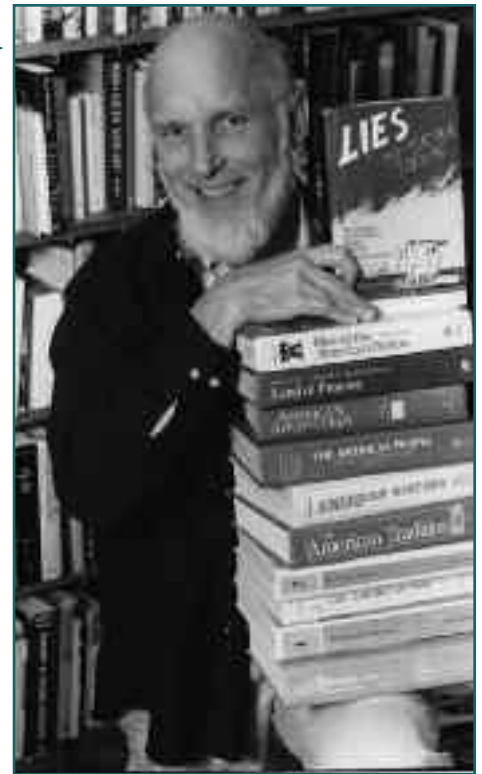


## Noted Author James Loewen Featured

On Thursday, September 13, noted historian, sociologist and author James W. Loewen will be here to share insights and information in three different presentations. First, from 10am to 11:30am, the Museum will host Mr. Loewen at a coffee and conversation about *Sundown Towns*, the book that reveals the hidden racism

still existing in many communities. The coffee will be followed by a book signing. From 4pm to 5pm, Loewen will present his workshop, "Lies My Teacher Told Me and How to Avoid Them: Teaching Lincoln and the Emancipation" at ISU's Milner Library and finally, from 7pm to 9pm, he will lecture on his book *Lies My Teacher Told Me* at Capen Auditorium on ISU's campus. All events are free and open to the public; books will be available for purchase and autographs at each event.

Jim Loewen taught race relations for twenty years at the University of Vermont. Previously he taught at predominantly black Tougaloo College in Mississippi. He now lives in Washington, D.C., continuing his research on how Americans remember their past. The Gustavus Myers Foundation named his new book, *Sundown Towns*, a "Distinguished Book of 2005." His awards include the First Annual Spivack Award of the American Sociological Association for "socio-



James Loewen, Author of *Sundown Towns* and *Lies My Teacher Told Me*

logical research applied to the field of inter-group relations," the American Book Award (for *Lies My Teacher Told Me*), and the Oliver Cromwell Cox Award for Distinguished Anti-Racist Scholarship. He is also Distinguished Lecturer for the Organization of American Historians.

## Director of Volunteers and Interns Leads Session at National Conference

Mary Anne Schierman chaired a session in May at the American Association of Museums conference held in Chicago. The session titled, "Creating a High Impact Volunteer and/or Docent Program," covered the basics and beyond of establishing a volunteer program and the significant impact a great program can make



Mary Anne Schierman served as chair of a session on creating a high impact volunteer program

on your institution, community and the lives of your volunteers. Mary Anne's co-presenters were Rhonda Hethcox, Director of Volunteers at the Birmingham Museum of Art and Maretta Hemsley-Wood, Docent Program Manager, of Smithsonian's National Air and Space Museum. The session was very well received by conference attendees. This is the second national conference session Mary Anne has presented as the Museum's representative.

Mary Anne has been the Museum's Director of Volunteers and Interns for over eight years, coordinating 300 individuals per year. She was recently named the President of the Mid Central Volunteer Coordinators' Association.

## ACHIEVE TAX SAVINGS AND OTHER IMPORTANT GOALS WITH A CHARITABLE TRUST

A charitable trust can be a valuable part of a sophisticated estate plan that protects your assets from significant tax consequences. You will gain additional satisfaction from supporting your favorite charity, such as the McLean County Historical Society.

### How a Charitable Trust Can Benefit You

As a result of significant tax savings, your deferred gift to charity through a trust may actually *increase* your income in the years to come. Advantages from certain charitable trusts include:

- ⌚ Gain immediate income tax benefits.
- ⌚ Avoid capital gains taxes.
- ⌚ Achieve federal gift tax savings.
- ⌚ Accumulate tax-free earnings of undistributed capital gains and income in the trust.
- ⌚ Achieve greater investment diversification or a newly refined portfolio management strategy that meets your financial objectives by reinvesting the entire principal amount.
- ⌚ Avoid estate taxes on the donated assets.

### You Retain Control of How the Trust Works

National City's Private Client Group can evaluate your particular financial planning objectives and, together with your legal advisor, explain in greater detail the benefits and sophisticated features of a charitable trust that might help you accomplish your goals. Here is a brief description of the two most common types:

- ⌚ **Charitable Remainder Trust** - You, your spouse, or any beneficiaries you designate may receive income from the trust for life or for up to 20 years. The charity you select will receive the assets remaining in the trust (the "remainder") when the income payments end.
- ⌚ **Charitable Lead Trust** - This type of trust is suitable for donors who don't need the income from the donated assets, but wish to receive—or give to family members or other beneficiaries—the assets remaining in the trust at the end of the specified period.

### When to Update an Existing Estate Plan

Keep in mind that any changes in tax laws, your family status, your marital status, asset ownership, and

asset value should prompt you to consult your legal advisor and the Private Client Group. Together with your legal advisor, they will help you take advantage of all the sophisticated planning techniques available to save you money or increase your assets. In accordance with industry recommendations, a complete financial and estate plan review may be warranted every three to five years.

### The Private Client Group at National City

The Private Client Group is the cornerstone of wealth management at National City and delivers comprehensive financial solutions to high-net-worth individuals and families with \$1 million or more in investable assets. The Private Client Group is made up of experienced and trusted advisors who provide a single point of access to a team of experts in investment management, fiduciary services, estate administration, private banking, brokerage\* and financial consulting services. Clients of the Private Client Group report higher levels of overall satisfaction compared to the total affluent market, according to a survey by TNS, an independent research firm, and are more likely to recommend it to others. For more information about the Private Client Group at National City Corporation, visit our Web site at [NationalCity.com/wealth](http://NationalCity.com/wealth).

\*Brokerage products and services are provided by NatCity Investments, Inc., a registered broker dealer, member NASD and SIPC and a subsidiary of National City Corporation.

To ensure compliance with IRS requirements, we inform you that any U.S. federal tax advice contained herein (including attachments) is not intended or written to be used, and cannot be used, for the purpose of avoiding any penalties that may be imposed under the Internal Revenue Code or for the purpose of promoting, marketing, or recommending any transaction or matter addressed herein.

This information is provided for informational purposes only and does not constitute legal, tax or other professional advice.

## Focus on Volunteers - Volunteers Make Exhibits Happen

The development of an exhibit is a process that takes a lot of staff time, but such exhibits would not happen without the dedication of Museum volunteers – lots of volunteers.

The Museum's exhibit *A Turbulent Time: Perspectives of the Vietnam War*, set to open in January, is no exception. More than three years ago, the Museum's collection and exhibit committee, which included board members Carol Stuck, Sandra Harmon and



Committee members discuss the Vietnam exhibit's contents

Ponce, who spent 150 hours scouring years of *Pantagraph* microfilm to identify Vietnam stories, letters and images related to events at home and abroad during the war.

More volunteers got involved in the project as individuals were identified for oral history interviews. These interviews would be key to presenting both pro- and anti-war views of the Vietnam War, and included all of the advisory committee members. An additional 20 volunteer participants (Jim Keeran, Chuck Witte, Earl & Carol Reitan, Marilyn and Bob Sutherland, Pam Lovell, Ralph Smith, Don Newberg, Mimi "Cha" Smith, Dexter Smith, Loy Conley, James Pruyne, V.L. "Bud" Fairfield, Terry Garbe, Terry Oberhardt, David Hardin, David Penn, John Penn and Carl Sneed) shared their time and memories in interviews that lasted from one to as many as six hours. Twenty-five of the interviews were conducted by IWU intern Lindsay Hawley, who spent (continued on Page 9)

Bob Eckley (Yes, board members are volunteers!) and community volunteers Rebecca Landau and Mike McNeil got together to discuss concepts for potential exhibits for the future. By the end of that meeting this committee had determined that the Vietnam War would be an excellent topic for a museum exhibit and the project was placed into the development schedule plan. Museum staff then identified a guest curator\* and organized an exhibit advisory committee. The committee, strictly volunteer, would consist of knowledgeable people from the community who could help us identify individuals for the oral history project, identify artifacts and primary resources in the community for the exhibit, serve as

our community liaison for these resources and brainstorm with staff to develop associated programming. Most importantly this group of volunteers served as a sounding board, reviewing drafts of the exhibit text as it is developed, making suggestions regarding content and insuring that the exhibit was accurate and inclusive. Mark Dunn, Terry Woodburn, Phil Dick, Carrol Cox, Clayton James, Steve Struck, Charles Morris, Chris Koos, Kha Pham and Jack Porter, representatives from differing perspectives on the Vietnam War, all agreed to work with the Museum on this project.

Research began almost immediately with the assistance of ISU intern (a volunteer position) Tom

# New Interns, New Projects, Summer Accomplishments

History and anthropology major **Jamie Grasser** wanted hands-on



experience with artifacts and exhibit materials. She spent the summer doing just that working in the collections department. In preparation for an exhibit on the Vietnam War, Jamie researched and prepared materials for the construction of a bunker. She learned how to electronically wire a board for an interactive, matching slang words used by troops with their meanings. Jamie pulled items from storage to be used for this exhibit and updated their records in the collection database. She also examined, cleaned and completed minor repairs while preparing the items for display. The skills learned in this internship will help Jamie decide if she wants to gain a master's degree in museum studies and pursue her desire to be a curator.

**Valerie Higgins** plans to get a degree in library science and become an archivist at an academic library. This summer she worked in the library/archives learning how to organize and create finding aids for several collections, including the Central Social Club collection, WJBC collection and the Judy Markowitz papers. Valerie organized

all of the materials in these collections, prepared them for archival storage in acid-free containers and folders. After the work was complete, she wrote a finding aid for each collection, which included a brief description of the entire contents, a history of the group or individual and a list of all the items. This list was organized to reflect the arrangement of the physical collection and place the items in their historical context. Now these collections are in a logical and accessible format for researchers. Valerie gained a fuller understanding of archiving purposes and processes, as well as practical experience. She will apply this knowledge as she prepares her applications to graduate school.



Miller Park was created in 1888. It is the largest park in the city of Bloomington. Over time it has experienced many changes in landscape and use. **Andrew Meseke** applied his skills in geography to report and map the complex cultural landscape of this park and its changes throughout the years. He conducted oral histories, interviewed park officials, and completed research at the Museum and local libraries. He particularly



wanted to find materials illustrating the different swimming holes in the park. Searching ISU's archives, he discovered a thesis written in 1950 by a science education graduate student. This student's research included pictures and a map showing not only the black and white swimming holes and bathhouses, but the children's as well. Upon the completion of his research, Andrew wrote an application for Miller Park to be entered into the National Register of Historic Places.



**Betsy Ludewig** interned this summer under the direction of Dr. Robert Dirks, the guest curator for

the Museum's upcoming exhibit on the history of food in McLean County. She researched related items in cookbooks, city directories, written histories of food-related subjects and the archives. These items were entered into a Microsoft Access database to facilitate the compilation of a cumulative history of food in the county from the early 1800s to the present. As a history major, Betsy learned many new skills needed for her degree and career objectives.

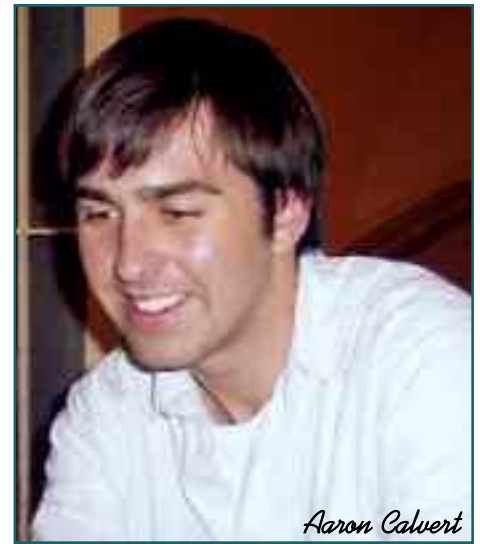


*Leslie Martin*

Using her skills as an Apparel Merchandise and Design major, **Leslie Martin's** internship was her final requirement for graduation at ISU. She learned how to handle textiles in the collection and wrote

physical descriptions, taking measurements and assessing condition. These tasks taught her the importance and history of each item she reviewed and entered into the collection database. During her project, Leslie utilized research, critical thinking and organizational skills. She had to make a decision regarding artifacts that could possibly be deaccessioned from the collection. The work completed during Leslie's internship contributed to the collection department's on-going re-evaluation project.

Before the start of his student teaching, **Aaron Calvert** wanted experience in another setting working with children. He spent his summer as the education department's public programs intern. In this capacity, Aaron assisted with three weeks of History Careers Day Camp. Each day was spent at a different location. The education department partners with the David Davis Mansion and Sugar Grove Nature Center for this camp which focuses on the variety of careers available in the history field. Building upon a partnership with the Centrillio Council of Girl Scouts, Aaron implemented activities for Brownie and Junior Girl Scouts to earn badges that were history-related. Every



*Aaron Calvert*

Thursday for eight weeks the girls came to the Museum to work on projects Aaron had developed. To round out his summer of experiences in the education department, he also worked on tasks for the 2007 Evergreen Cemetery Discovery Walk. Aaron will take these experiences into his student teaching this fall, knowing how important resources outside of the classroom can be for a teacher and their students.

*The Museum offers internships to university students year around. If you are interested in learning more about this program, please contact Mary Anne Schierman, Director of Volunteers and Interns, 827-0428 or email: [volunteers@mchistory.org](mailto:volunteers@mchistory.org)*

## Corporate Relations at the McLean County Museum of History

It is a great signal of the leadership of our corporate community that so many businesses operating in McLean County have supported the museum through membership and sponsorship. Our Corporate Relations program finds ways of matching the interests of our business community to our award-winning programs, exhibits and educational services.

For the second year in a row, Busey Bank will be the corporate sponsor of the Evergreen Cemetery Discovery Walk. Busey Bank returns as the Discovery Walk's corporate sponsor for 2007, so keep your eyes peeled for a special Busey Bank "Fun Facts About McLean County" bookmark at the Walk, dedicated entirely to ISU's rich history. This year's Walk will be special as we are partnering with ISU on their sesquicentennial celebration. ISU has generously agreed to publish the Walk playbill, and we are very happy to have both Busey Bank's and ISU's support for what has grown into one of our signature events.

In our last newsletter, I mentioned the growing number of corporate members we currently have, including ISU, State Farm, NICOR, Illinois Wesleyan and Felmley-Dickerson. While those businesses and institutions have joined up under our Corporate Relations program, it is also important to note how many other businesses both large and small support the Museum throughout the year with membership gifts, in-kind donations, and general donations to our operating fund. We simply would not be able to have developed into the Museum we are today without their generous support.



# Museum Hosts Citizenship Ceremony

The McLean County Museum of History and the U.S. Citizenship and Immigration Services held a naturalization ceremony on May 4th, swearing in over 50 new American citizens. Immigrants representing 23 different countries took an oath of citizenship in a celebration attended by 100+ family, friends and dignitaries.

eral years ago from England to work in the medical field. He and his son Ryan Lee took the oath together. Others cited the right to vote as the primary reason for their quest for legal citizenship. Voter registration assistance was on hand to help them do so. Several immigrants came to settle here from as far away as India and Africa. One woman stated that she and her husband migrated to the U.S. to escape persecution in Afghanistan.

The idea to host a ceremony in the courtroom was conceived by members of the McLean County Hispanic Latino Workgroup during their conference at the Museum in 2006. Jeff Woodard, Director of Marketing and Public Affairs for the Museum, met with Valentine Obregon, Sr. and the Community Liaison Officer for the U.S. Citizenship and Immigration Services to develop the event, however, many people are responsible for making it a success. We want to thank Phillip



The ceremony was held in the historic Gov. Fifer courtroom at the Museum and presided over by the Honorable U.S. District Judge Richard Mills. Judge Mills commented that the Museum was the perfect place to hold such a ceremony.

The introduction of guests was given by Mayor Stephen Stockton. The Museum's executive director, Greg Koos, spoke of the strong work ethic innate to the immigrants who settled in McLean County, pointing out that the rich mosaic floors of the courthouse were made possible through immigrant labor. Each new citizen was also presented a copy of the Museum's Lincoln in Bloomington Normal audio tour CD.

The stories of those who became citizens are as diverse as the nations they represent. Yarela Beltran-Osgood returned here from her native Chile to marry the high school sweetheart she met as a foreign exchange student. Beltran-Osgood recently completed her master's degree in Spanish at Illinois State University. When asked about her newly gained citizenship, she said, "I love this country, which has given me so many opportunities to study and work. Why not be a U.S. citizen?" Alan Sharples came to the area sev-



Browndeis and Stacey Summers of U.S. Citizenship and Immigration Services, the U.S. Marshal's office, Pamela Robinson, Chief Deputy Clerk of the U.S. District Court and Marti Jones, executive director of The Immigration Project.

The Museum is also grateful for the support of local

organizations and individuals who made this occasion possible: the McLean County Sheriff's office, City of Bloomington, the former head of the Western Avenue Community Center, Cristina Deutsch (Immigration Project representative) and Socorro Alvarez, social services coordinator at Western Ave. Community Center, Master Sgt. Charles Cannon and the Illinois State University ROTC color guard, Daughters of the American Revolution- Letitia Green Stevenson Chapter, First Presbyterian Church of Normal, Bloomington/Normal League of Women Voters, the Sunset Rotary Club and the Museum staff.

The U.S. District Court (Central District of Illinois) expressed its gratitude to the McLean County Museum of History for making the Old McLean County Courthouse available for this impressive and memorable event.

Thanks to the Museum's New Communities Initiative, an Illinois Humanities Council (IHC) supported program, we are developing the means to



attract new visitors and programs that appeal to the new communities of McLean County. The naturalization ceremony is an integral part of reaching the goal.

#### (Vietnam volunteers, continued from Page 5)

160 hours on the project and did an incredible job capturing the Vietnam experience. The transcription of these interviews was completed by Carol Herdien, our dedicated volunteer transcriptionist, who spent over 200 hours completing this daunting task.

Over the last year, hundreds of negatives borrowed from the *Pantagraph* archives have been painstakingly scanned by Bill LaBounty for use in the exhibit. This past spring, another ISU intern, Josh Rosen, spent 80 hours helping to organize all the data and materials gathered to create the exhibit. And this summer Jamie Grasser, also an ISU intern, helped to prepare artifacts, gather materials for interactives and prepare the gallery for the exhibit. Volunteers Don Fox and Darryl Zook spent two days painting the exhibit gallery.

Thirteen more volunteers (Mary Kay Zeter, Doug DeLong, Jim Anderson, Doug Williamson, Judith Myers, Patricia Luthe, Sandra Harmon, Pam Muirhead, Eileen Kanzler, Judy Stone, Mary Hollywood, Jean McCrossin, and Kay Ramseyer) got involved in July when they participated in two pre-production evaluations of the exhibit. After viewing scaled down versions of the exhibit panels, taking notes and placing post-it note comments directly on the panels, discussions regarding the exhibit's content, layout and design were conducted. Feedback from the sessions was used to clarify exhibit themes and ideas, identify weaknesses in the content, identify the need for additional images and text that needed refining. A statement from one of the post-it notes was actually inserted into the exhibit as a quote regarding how locals reacted to a particular event. The evaluation process was also repeated by the exhibit advisory committee. As the time nears for the installation of the exhibit, the efforts of more volunteers will undoubtedly be used to help to make this a successful exhibit.

My sincere gratitude and thanks go out to all these volunteers for their dedication and assistance. Without their help the Museum would not be able to continue to create award winning exhibits.

*Susan Hartzold*

\*In the past many guest curators have served in this capacity as a volunteer. This is a tremendous gift, as the development of an exhibit is a time consuming and challenging project. And while many guest curators do accept a very small stipend, such compensation does not accurately reflect the true value of their work or the time and effort they invest in such a project.

# McLean County Museum of History

## Calendar of Events for September, October and November 2007

**Lincoln exhibit in Stevenson-Ives Library.** Lincoln-related items on display inside the Library in conjunction with Illinois State University's Milner Library hosting of the traveling exhibit *Forever Free: Abraham Lincoln's Journey to Emancipation*.



EXTENDED THROUGH OCTOBER 28, 2007

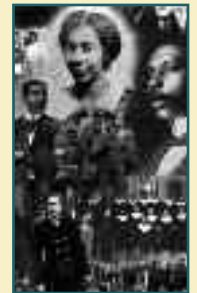
**Journey through the Great Depression.** From the crash of the stock market through the bombing of Pearl Harbor, the exhibit takes visitors on a "road trip" through the 1930s - an expedition that explores the broad range of conditions experienced by local residents in their 11-year journey through the Great Depression.

Saturdays, through October 28, 2007 (Does not include admission to special events)

**Barter Saturdays.** Bartering for goods and services was common during the Great Depression, as well as donating items to the less fortunate people in the community. Every Saturday during the run of the Depression exhibit, visitors may barter for admission by bringing any item listed to donate to the residents of Safe Harbor homeless shelter. Barter items may include trial-sized shampoo, combs, antiperspirant, toothbrush and paste, disposable razors, lotion, paper plates, plastic eating utensils, socks, towels, sheets and blankets for twin beds, pine cleaner, dryer sheets and powdered laundry soap. Men's clothing is especially needed. THANK YOU for your contributions; they really make a DIFFERENCE!

Through May 25, 2008

**Presence, Pride & Passion: A History of African Americans in McLean County.** Since their arrival in the 1830s, African Americans have helped to shape this community. Their strong drive for independence, their actions against racial injustices, and their desire to celebrate the uniqueness of their culture are explored in this groundbreaking exhibit.



September 1, 2007 8:30 a.m.

**Museum at the Market:** Beneficial Bugs day: **Monarch butterflies** are fast flyers and pollinate, too!

September 3, 2007

**Museum Closed for Labor Day Holiday**



September 4, 2007

**Evergreen Cemetery Discovery Walk:** ISU Edition tickets on sale today. Tickets cost \$14.00 non-member, \$12.00 Museum members, \$4.00 for students with ID and kids. Buy them in advance and save \$2.00 each! (does not apply to student tickets). Get them from the Museum, the Garlic Press in Normal, the Bone Student Center box office, or on our website, [www.mchistory.org](http://www.mchistory.org)

September 8, 2007 10:00 a.m.

**Museum at the Market:** Lincoln in Downtown Bloomington: A Walking Tour by Greg Koos. Gather by the Museum's front steps at 10:00 a.m.

September 11, 2007 11:30-1:00 p.m.

**Lunchtime Concert.** Remember those lovely summer afternoons on the lawn listening to music? Join the excitement INSIDE the Museum for concerts by local musicians for FREE. Bring your brown bag and enjoy the tunes!

September 11, 2007 7:00 p.m.

**“Highlights of Bloomington Schools District 87 History,”** presented by Dan Leifel, former Board of Education president and principal author of the District 87 Sesquicentennial Book. Leifel’s show includes slides and artifacts, as well as lots of interesting tidbits!

September 13, 2007 10:00 a.m.

**“Illinois’ Sundown Towns: A Conversation,”** presented by nationally renowned author and historian, James W. Loewen, in partnership with ISU History Department and Milner Library. Join us for this fascinating look at the hidden racism still existing in some Illinois communities.



September 13, 2007 4:00 p.m. at Milner Library

**“Lies My Teacher Told Me and How to Avoid Them: Teaching Lincoln and Emancipation”** presented by James W. Loewen, in partnership with the Museum, ISU History Department and Milner Library. Teachers and students alike will benefit from this in-depth look at how history textbooks perpetuate incorrect information, and how teachers can get their students to challenge, rather than memorize, their textbooks. CPDU Credits available through ISU.



September 13, 2007 7:00 p.m. at Capen Auditorium

**“Lies My Teacher Told Me”** will be presented in lecture format for the general public by James W. Loewen. This book has sold over 800,000 copies and won an American Book Award. Join us to unlearn some of what we think we know!

September 29, 30 and October 6, 7

**Evergreen Cemetery Discovery Walk:** ISU Edition begins. Tours are at 11:00 a.m. and 2:00 p.m. each day. Tickets on sale at the Museum in Bloomington and on the Museum's website, [www.mchistory.org](http://www.mchistory.org), Garlic Press in Normal, and the Bone Student Center. Call 827-0428 for more information.

October 9, 2007 11:30-1:00 p.m.

**Lunchtime Concert.** Remember those lovely summer afternoons on the lawn listening to music? Join the excitement INSIDE the Museum for concerts by local musicians for FREE. Bring your brown bag and enjoy the tunes!



October 12, 2007 7:00 p.m.

**An Evening with Utah Phillips,** featuring songs and stories of the common man and woman. Tickets are \$20.00, available through the marketing department at 827-0428 or at the door that evening. General Seating.

November 13, 2007 11:30-1:00 p.m.

**Lunchtime Concert.** Remember those lovely summer afternoons on the lawn listening to music? Join the excitement INSIDE the Museum for concerts by local musicians for FREE. Bring your brown bag and enjoy the tunes!

November 11, 2007 10:00 a.m. and 1:00 p.m.

**Veteran’s Day Observances:** Louis E. Davis American Legion Post 56 memorializes veterans of all wars at 10:00 a.m. followed by a World War Two Veterans panel discussion, presented by the Museum and WILL-TV. Join us for real stories of war, the hardships, the excitement, the laughter and the tragedy, as told by four veterans from McLean County. Refreshments in between events.

## Utah Phillips Returns October 12

U. Utah Phillips, folksinger, story teller and punster is returning to the McLean County Museum of History for a Friday night performance on October 12 at 7:00 pm. Utah is described by Studs Terkel as “A

bard who gives us hope and joy.” Utah tells stories of people who struggle to make a difference. His music is out of the traditions of Woody Guthrie and Pete Seegar. Writing many of his own songs he has added much to the folk tradition. His music has been performed by Joan Baez, Emmylou Harris, John Denver, Flatt and Scruggs, and Debbie Reynolds!

Utah’s performance seems like sitting on a front porch and listening to the best wisecracking guitarist you ever heard. He will tell a story - a stretcher - illustrate the point of the story with a song, and then turn it all inside out with an outrageous pun.



As a person who is fighting a heart problem and other issues that accompany all as we get along, he has made a choice best expressed in his answer to a TV interviewer for the Children’s Network who asked if he were ready to pass on the torch., Utah replied “No, I’m not ready to pass the torch, I’m not done with it, and you’ll have to go through me to get it. The world does not belong to the young, I was here first. But here is an idea: I’ll carry the torch, you carry me.”

Co-sponsored by Vitesse Cycle and Francois Associates Architects, the performance starts at 7:00pm and admission is \$20.00. Last year we had people from three different states come for his performance. He packed the house. Be sure to be there - EARLY!

## Girl Scouts Day Camp Comes to Museum

A new program co-sponsored by the McLean County Museum of History and the Girls Scouts of Centrillio Council was created for local area Brownie and Junior Girl Scouts. The scouts attending the summer Day Camp at Hike Haven (located at Forest Park in Bloomington) visited the Museum to earn badges.

About twelve girls attended the Museum on Thursdays for eight weeks this summer to do history-related activities in order to earn Brownie Try-It Badges or Junior Girl Scout Badges. Because of the success of this new program,

the Museum’s Education Department has decided to add some of these badge programs to its regular programming. This will hopefully encourage more Girl Scout groups to use the Museum in the future.

The staff of the McLean County Museum of History would also like to extend a special thank you to Katie Holtzman, Membership Specialist of the Girl Scouts of Centrillio Council, for working with us to make this program possible. We’re looking forward to a long and beneficial partnership!

Girl Scout day camp participants role play at the Museum



## Staff Profile



Terri Clemens - Registrar

**How long have you lived in McLean County?** My parents met and married while at Wesleyan. I was born here and have been away twice for less than 2 years each time, to England and to Dixon, IL. I grew up on White's Place and near Lexington, and raised my kids in Lexington.

**How did you end up at the Museum, and how long have you been here?** This is the job I wanted while I was going to college as an adult student. I was lucky enough to be looking at the classifieds when the job appeared. That was in February of 2000. The timing was perfect for me. My husband was retiring and my real estate career kept me too busy for any travel time. The fact that this job is part time wouldn't have worked before that.

**What, exactly, is a registrar?** Museum registrars keep the records of the objects in the collection. I get to research, describe, and clean each object and make the records as rich as possible by getting the date right and making sure the provenance fits. I also add business and family history to the object records to help tell the stories of the objects.

**How does your background in the antiques business help you do your**

**job here at the Museum?** It cuts out a lot of research time, as I already know what most things are. I know the research literature about material culture and can quickly research most old objects. More importantly, loving these old things helps me love my job.

**What is your favorite object in the collection?** The sculpture made from soap by an occasionally insane inmate in the county jail. It's a very elaborate sculpture of Civil War soldiers with a cross embossed GAR (Grand Army of the Republic), birds, flowers, all kinds of detail, done with his thumbnail and a pin while he spent time, often voluntarily, in jail.

**What is the strangest object in the collection?** A chunk of elephant skin gets my vote. Our collecting habits sure have changed over the years.

**What are some gaps in the Museum's collections?** Men's everyday clothing doesn't get saved enough. We have plenty of dress clothes and t-shirts, but not any patched overalls. Our collection of decorative objects are lacking in provenance. We have dishes and vases, but they were collected before curators cared who used them, so they don't have good stories. We're much more interested in provenance now than we were in the early twentieth century.

**Can Museum members help fill those gaps?** Yes, anybody can make donations to the collections! The decorative objects with stories tend to be valued family heirlooms. And the patched overalls don't get saved. We like things that have good stories to tell.

**What's the best part of your job?** Being immersed in old stuff, and

being able to get sidetracked by an object that has a research problem waiting to be solved. I get to work independently, usually with no deadlines. I can switch from one aspect of my job to another when I get bored.

**Tell us about your family.** My son Josh Hardt lives in Lexington with his wife Julie and three daughters, Talli, Tia and Josie. He is an Edward Jones financial consultant in Normal. They live in the house my parents built near Lexington in the 1960s. My daughter Carrie Hardt-Smith lives in Bloomington with her sons Noah and Asa. She teaches high school kids at the Alternative Regional School. I have a stepson, Terry Eisele, who lives with his wife Michelle Kozak in Columbus, Ohio. He teaches English as a Second Language at Columbus State. Also, my parents Don and Shirley Clemens live in Bloomington. Mom volunteers for the Museum; Dad's still thinking about it.

**Do you have any hobbies? What do you do to relax?** I'm always knitting something. I am reading from five lists of classic books in an effort to be more literate. I just finished *Passage to India* and *The Tin Drum*. Now I'm reading *Robinson Crusoe*. I love to do genealogy, my own and some for photos I adopt at sales and try to return to their families. I sell things on Ebay from our pile in the attic. My husband Chris Eisele and I like to travel, to the Southwest, to do genealogy, or to auctions. I play with my grandkids a lot. And I'm busy with being president of Dimmitt's Grove Neighborhood Association and Questers, an antique study group. I serve on the city's Historic Preservation Commission, trying to save old houses.

On the Square Newsletter Sponsored by

**National City**

# New to the Collections

## OBJECTS

- ❑ Mechanical pencil; donated by Greg Koos
- ❑ Maid of honor's dress, wedding dress and veil worn for wedding of Ella Schroeder Tosh, bridesmaid dress, c. 1963; donated by Ella Tosh
- ❑ Hill Radio pencils premium from Blue Bonnet Margarine; donated by Peggy Fuller
- ❑ Telegraph key used by John Kellerhals; donated by Richard Kellerhals
- ❑ Harold Sinclair's coffee mug; donated by Gary Heath
- ❑ Jesse Fell portrait; donated by Thomas Theobald

- ❑ Cecil Carlock's Lions Club pinback button and Socony Vacuum employee's badge, Carlock-Long advertising wallet, ISNU 1929 decathlon medal of Burton Carlock; donated by Betty Carlock Lyons
- ❑ WWII patches and pins of Wilbur Phillips, political buttons, arrow-heads and Butcher's Union badge; donated by Debbie Phillips
- ❑ Banana Taffy box; donated by Amy Miller
- ❑ "I'd Rather Play Tennis" apron; donated by Jean McCrossin
- ❑ GM&O tools; donated by John Hoog
- ❑ GM&O injector timing tool; donated by Charlie Penn

- ❑ Cash register from Woolen Mill; donated by Jim Meizelis
- ❑ Tall case clock, dental cabinet of Dr. J.A. Moore, instruments and denture case and dental tools of Dr. J.A. Moore, child's rolltop desk of John Jordan Moore, apothecary scale from Moore Pharmacy, Prang print – 1908 wedding gift, stein; donated by John Jordan Moore
- ❑ Homemade Indian costume, c. 1933; donated by Bill Miller
- ❑ Lincoln litho-serigraph; donated by Neil Farkas
- ❑ Panama hat in bamboo mailing tube, hand knit shrug, banana split dish from Lexington Oasis, Roland's premium child's book; donated by Verneil Siron
- ❑ Children's clothing of Gus and Renée Jumonville; donated by Susan Hartzold
- ❑ Smugu the circus performer's traveling case; donated by Larry Keeran
- ❑ Mercer Turner's erector set and chemistry set, Carol Turner's candys-triper's hat and POW bracelet; donated by Mercer Turner



## Clock From Consistory Donated

This Empire Revival tall case clock was donated to the Museum last winter by John "Doc" Colteaux. Colteaux bought it at auction and later decided the best home for it was the Museum. Standing over seven feet tall, the case is made from mahogany. The brass face and works were made from German parts by watchmaker and jeweler William P. Garretson of Normal. Mr. Garretson worked as a watchmaker for Bloomington jeweler August Elbe until he opened his own jewelry store at 309 North Main in 1911. The clock kept time for many years in the Scottish Rite Temple's library at the Consistory, (now the Center for Performing Arts) which opened in 1922.

## ARCHIVES

- ❑ More than 100 Quinton family letters, World War II and earlier; by James R. Quinton
- ❑ *Mad Magazine*, July 1960, featuring Adlai E. Stevenson on the cover; by Brian Simpson, Babbitt's Books
- ❑ "Century of Progress" World's Fair, 1933, souvenir material including official guide book, postcard, and photo booklet; by Pat Hamilton
- ❑ Material relating to Cecil Carlock, Jack Dempsey and the DeVry Institute, as well Carlock Christian Church items, including bulletins, membership book (1968), and centennial and sesquicentennial booklets; by Betty Carlock Lyons
- ❑ Various issues of the Bloomington *Bulletin* newspaper (daily, weekly, and Sunday), 1897; by George Gordon
- ❑ Central Social Club (Randolph Township), scrapbooks and minutes, 1920-1927; by Ella L. Tosh
- ❑ Certificate for Chas. Kammerman, Bloomington alderman, circa 1912-1915; by Elmer Fry
- ❑ Portable Elevator Mfg. Co. catalog, no date; by Greg Koos
- ❑ Diary of Morton Lake, 1893; by B. Anita Lake-Maykoski

- ❑ Chicago & Alton Railroad ledger showing employee hours, 1935-1944; by James White
- ❑ William McDowell Dever memorial booklet (1985); IAA home office staff directory, no date, various items on Edwin H. Cooke, Reporter of Decisions for the Illinois Supreme Court, 1942-1976; by Mark Dunn
- ❑ Campaign literature relating to 2007 Bloomington City Council Ward 2 race between Mike Matejka and David Sage; by Mike Matejka
- ❑ Model Laundry Co. receipts, 1917; by Robert G. Ward
- ❑ GM&O Railroad employment records; John E. Hoog, Jr.
- ❑ Directory, Bethlehem Rebekah Lodge No. 32 (Odd Fellows), 1949-1950; by Jean McCrossin
- ❑ American Passion Play program and playbill, 1933; by the Putnam County Historical Society, Hennepin, IL
- ❑ Material relating to history of Lower White Oak Christian Church (later Carlock Christian Church), hand-drawn map of Carlock, 1902, various items relating to Carlock family genealogy; by Betty Carlock Lyons
- ❑ Dewenter & Co. ledger books, 1930s; by Tom Hoffman
- ❑ Manuscript on Kumler, West Township, 24 pages; by Joan and Robert Stager
- ❑ Copybook and ledger, Jesse Fell, U.S. Army paymaster, 1863-1864, and tributes of friends and associates upon death of W.O. Davis, May 22, 1911; by Mr. and Mrs. Davis Merwin
- ❑ Material relating to the Baby Fold, and items relating to Heartland Theatre Company; by Ruth Cobb

**BOOKS**

- ❑ Bloomington City Council *Proceedings*, twenty-one bound volumes, earliest 1918, most recent 1974-75; by Walt Bittner, care of the Mac Arnold law office.
- ❑ Large collection of books published by McKnight & McKnight Pub. Co.; by the estate of William W. McKnight, Jr.
- ❑ *Songs for Service*, ca. 1910; by Ruth Titterton
- ❑ Civil War reference books, including *Civil War Firearms* (1996) and *The Atlas of the Civil War* (1994); by John Jordan Moore

**PHOTOS**

- ❑ Contact sheets with photographs of the Doc White bomb shelter, 1962-63, Stanford; by Tom W. White
- ❑ Seven photographs relating to Cecil Carlock and promotions involving boxer Jack Dempsey; Carlock family reunion photo, ca. 1922, and others; by Betty Carlock Lyons
- ❑ Henrietta Lake and family, 1890s; by B. Anita Lake-Maykoski
- ❑ Two photographs of Model-Paris Laundromat, 1930s, and interior of My Store, 1920; by Robert G. Ward
- ❑ Six photographs of GM&O Railroad clearing tracks, winter of 1967; John E. Hoog, Jr.
- ❑ John A. Moore, D.D.S., in his office, no date; by John Jordan Moore
- ❑ Various, including 8x10 showing 500 block of N. Main St., downtown Bloomington, ca. 1915; by Josephine Theobald

To make donations of photographs, books or archival materials call the Museum's Librarian/Archivist, Bill Kemp. If you have objects you wish to donate to the collection call the Museum's Curator of Collections, Susan Hartzold. Both can be reached at the McLean County Museum of History, 827-0428.

## Volunteer Help Wanted\*

**Reception Desk Volunteers** - Weekend shifts needed. In this position, the volunteer is the official greeter and Museum representative. The reception desk assistant greets visitors, and gives them a brief introduction to the Museum. They also answer the phone, take brief messages for staff, and answer general questions. A complete training is provided. In this interesting position, you meet visitors from all over the world. Reception desk assistants are asked to serve two four-hour shifts per month. The Director of Volunteers and Interns works with your schedule and availability.

**Library Reference Assistants** - Day and weekend shifts needed. In this position, you assist visitors using the library for genealogical and historical research, and perform the regular tasks of shelving books and answering phone calls.

A complete training is provided. Volunteers are needed for Monday through Friday (9:30 a.m. - 1:00 p.m. and 1:00 p.m. - 5:00 p.m.), Saturday (9:45 a.m. - 1:00 p.m. and 1:00 p.m. - 5:00 p.m.) and Sunday (12:45 p.m. - 5:00 p.m.). The Director of Volunteers works with your schedule and availability.

**Education Outreach Volunteers (EOV)** - Education Outreach Volunteers are trained to assist the Director of Education and the Education Program Coordinator with school tours. This is a very flexible volunteer opportunity. You are called to assist as the need arises. The average time commitment is usually two hours. Education volunteers work with children of all ages, but primarily pre-school through junior high. A complete training and all materials are provided.

\*Are you interested in meeting people in an exciting atmosphere and contributing to your community? Please call Mary Anne Schierman, Director of Volunteers and Interns ([volunteers@mchistory.org](mailto:volunteers@mchistory.org) or 827-0428) to receive information on the volunteer program.



## MYSTERY HISTORY QUIZ

Hopefully, this issue's image will prove easier to identify. Can you tell us the location and purpose of the building shown here? If you think you know the correct answer, please contact Museum Librarian / Archivist Bill Kemp at [library@mchistory.org](mailto:library@mchistory.org) or 827-0428.

## Mystery History Quiz Responses

Only one, (one!), Mystery History sleuth correctly identified last issue's postcard showing a bird's eye view of Cooksville, circa 1890s. The solo winner was Bob Scott. Incorrect guesses included Carlock and Colfax.

Founded in 1884, Cooksville is located in Blue Mound Township. For years, Cooksville was a stop on the "Bloomer Line" of the Illinois Central Railroad. In 1910, Cooksville's population was more than 330; today, about 200 call it home. Perhaps the most famous Cooksville native is Walter Dill Scott (1869-1955), who served as president of Northwestern University in the 1920s and 30s.



ADDRESS SERVICE REQUESTED



Non-Profit Organization  
U.S. Postage  
**PAID**  
Bloomington, IL 61701  
PERMIT NO. 118