



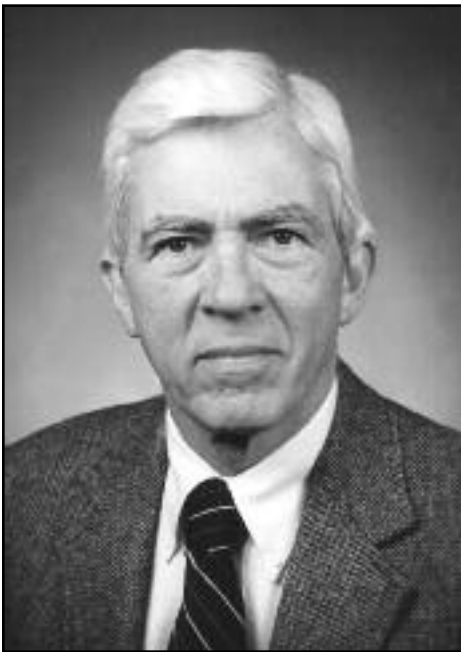
# On The Square

Sponsored by Heartland Bank

## The Quarterly Newsletter for the McLean County Museum of History

Volume 41, Number 4

December, January, February 2009-10



**Fred Dolan (1924-2009)**

The Museum of History lost a very good and dear friend this October. Places are made by those who lend a hand to guide, to build and to conserve. Fred did all of those things and more here at the Museum of History. His first work with us was in 1982 serving as publishing consultant and printer for the *Illustrated History of McLean County*. This book went into multiple editions and set a national record for profit. Fred joined the board the next year. In 1988 he became Board President and led the successful \$2.5 million fund drive which allowed the historical

## Christmas at the Courthouse 2009

It's that time of year again to celebrate the season with friends, fun and holiday cheer. Bring your family to the Museum on Saturday, December 5, for the 19th annual Christmas at the Courthouse event. From 11 a.m. to 4 p.m., you will be able to sit on Santa's lap, try your hand at festive holiday crafts, and write a personal letter to servicemen and women staying at local Veterans Affairs hospitals. This year we will collect canned, unexpired food donations for the Claire House. This free event is brought to you by State Farm Insurance and is open to the public. So come one, come all and have a ball!




Announcing the McLean County Museum of History's

### 19th Annual Christmas at the Courthouse

Free cookies, punch & coffee  
Children's craft tables  
Live entertainment

Saturday, December 5, 2009  
11 a.m. to 4 p.m.

society to create the McLean County Museum of History. During his tenure as Board President Fred also oversaw the conversion of the Old Courthouse into the Museum of History. Fred remained an active and involved board member. His insight, wisdom, and high standards were evident and closely considered in board discussions. With his brother-in-law, Carl Behr, he recently endowed the Dolan & Behr Gallery, which currently houses the exhibit *A Turbulent Time: Perspectives of the Vietnam War*.

#### Inside this issue:

World War II Loan Kit . . . . .	2
Museum Receives Harmon Arts Grant . . .	2
Ameren Sponsors Guide and School Tours . . .	2
Poets Gather at Museum . . . . .	3
Illinois Wine Lecture and Tasting . . . . .	3
Volunteer Help Wanted . . . . .	4
Stevenson House Treasures Open Feb. 5, 2010 . . .	4
Focus on Volunteers . . . . .	5
New Members . . . . .	5
Fall Interns Enjoy New Experiences . . . . .	6-7
Holiday Gift Ideas From the Gift Shop . . . . .	7
2009 Evergreen Cemetery Discovery Walk . . . . .	8-9
Calendar of Events . . . . .	10-11
Give a Gift of History! . . . . .	12
New to the Collections . . . . .	13-15
Schneider Bakery Box . . . . .	13
Lawrence Irvin Collection Donated . . . . .	14
Cemetery Walk Staff Present at State Conference . . .	15
Mystery History Quiz . . . . .	16

# On The Square

## Quarterly Newsletter

Volume 41, Number 4, 2009-10



Edited by  
**Susan Hartzold**  
**Bill Kemp &**  
**Bill LaBounty**

**McLean County Museum of History**  
200 N. Main St., Bloomington, IL 61701  
Phone (309) 827-0428 Fax (309) 827-0100  
[www.McHistory.org](http://www.McHistory.org)

#### HOURS

Mon., Wed., Thur., Fri. & Sat. 10 a.m.-5 p.m.  
Tuesday 10 a.m.-9 p.m.

#### STAFF

Greg Koos, Executive Director  
Susan Hartzold, Curator of Collections and Exhibits  
Mary Anne Schierman, Dir. of Volunteers and Interns  
Bill Kemp, Librarian/Archivist  
Jeff Woodard, Dir. of Marketing & Comm. Affairs  
Candace Summers, Director of Education  
Graham Cowger, Mgr. of Development Operations  
George Perkins, Assistant Librarian/Archivist  
Terri Clemens, Registrar  
Rachael Masa, Education Program Coordinator  
Harlan Fuller, Bookkeeper  
Betty Turchirollo, Volunteer Assistant

#### OFFICERS

Robert Watkins, President  
Mark Dunn, First Vice President  
Rob Fazzini, Second Vice President  
Nancy Froelich, Secretary  
Peter Borowski, Treasurer  
Michael G. Matejka, Immediate Past President

#### DIRECTORS

Craig Alexander	Mark Gibson
Carl Behr	Sandra Harmon
John Bowles III	John Killian
Al Bowman	John B. Meek
Roger Bridges	Pam Muirhead
Willie Brown	Benjamin Rhodes
Sarah Butler	Matt Sorensen
David Dorris	Richard Wilson
Russel Francois	Carolyn Yockey

#### PAST PRESIDENTS

David Ashbrook	Steve Wannemacher
Edward B. Jelks	Chuck Wright
Benjamin J. Rhodes	Carol Struck
Don Skaggs	

#### DIRECTORS EMERITI

Barbara Allsup	Carol Struck
David Ashbrook	Mike Sweeney
Maryfern Bartrum	Steve Wannemacher
Edward B. Jelks	Lloyd Watkins
Davis Merwin	Chuck Wright
James A. Stahly	

## ISU History Students Assemble World War II Loan Kit

Thanks to support from the Shirk Family Foundation and Illinois State University, the Museum will soon be offering an educational loan kit on World War II. Loan kits are local history “museums in a box.” Oftentimes, they are checked out by area teachers and taken back to their schools, where the kits serve to supplement classroom teaching. Richard Hughes, Illinois State University history professor, has assigned his History 290 students with creating the WW II loan kit for the Museum. This project will help prepare these students to become teachers themselves. The class is researching the McLean County experience during WW II, which includes a wide range of topics, including soldiers, women and children, as well as economics and mobilization, African Americans and race and other topics.

The finished loan kit will include artifacts from both the frontlines and the home front. Professor Hughes noted that this project is “mutually beneficial” for his students and the Museum. We’d like to thank the Shirk Family Foundation for providing the means to create this program, and to Dr. Hughes and his students for their hard work and dedication in helping to bring local history alive for McLean County students.

## Museum Receives Harmon Arts Grant

The McLean County Museum of History was awarded the Town of Normal’s Harmon Arts Grant this year for our History Careers Day Camp. The grant supports arts-related activities in the Twin Cities, and was awarded to help fund the photography and architecture activities of this year’s camp.

This summer, more than half of the participants attended free-of-charge through a Museum scholarship for students from income-limited households. For the past six years, the camp has provided an affordable way for rising fourth through sixth grade students to explore careers that are related to history, and we appreciate the Town of Normal’s support for this program.

## Ameren Sponsors Program Guide and School Tours

Ameren has agreed to become a sponsor of the Museum’s annual Education Resource Guide, which will help cover the costs of printing and postage. This guide features student programs offered by the Museum and is sent to every teacher in McLean, DeWitt and Livingston counties, as well as many teachers in Woodford, Tazewell and Champaign counties. That comes to more than 3,000 teachers. As part of this sponsorship, Ameren will also be the sponsor of school tours at the Museum. We thank Ameren for supporting our educational mission.

# Poets Gather At Museum

On October 27, members of the Poetry at Babbitt's Workshop presented 30 original poems to an audience at the Museum. The program was a rousing success and included the poem to the right, written and presented by Peg Kirk. Peg is a volunteer for the museum and wrote the poem in response to her experiences as a receptionist at the front desk. We thought you might enjoy it!

## A Museum Receptionist Reflects

by Peg Kirk

Regulars like genealogists  
and history buffs breeze by,  
wistful townies drift in warily

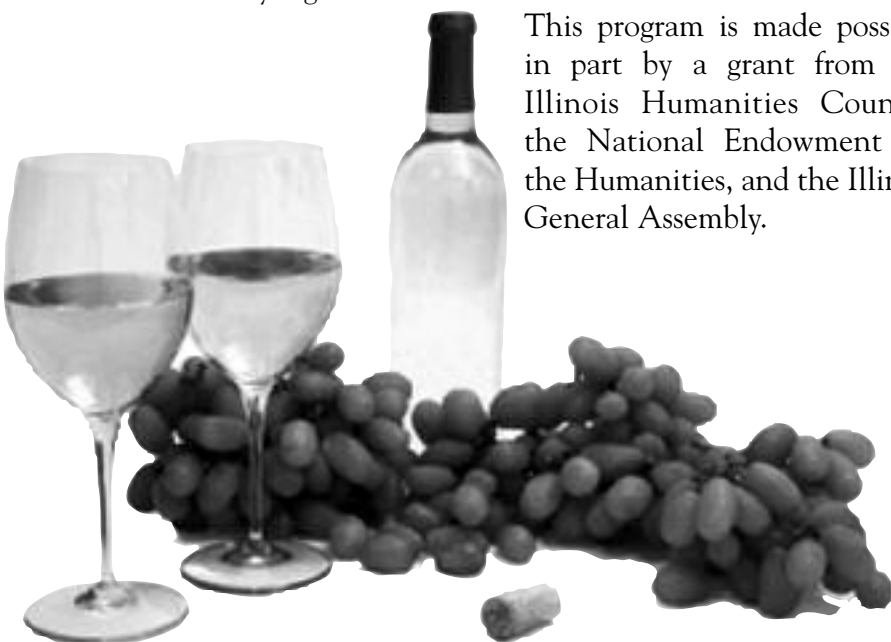
and city-lovers seeking respite  
from relentless rows of corn  
sigh and sign the guest register.

## Illinois Wine Lecture and Tasting

Join the Museum for an evening of fun, education and wine. Executive Director Greg Koos will present a lecture on the history of winemaking and growing in McLean County and Illinois. A tasting featuring wines from throughout Central Illinois will follow the lecture. The program will be held on Thursday, January 21, from 7:00 to 9:00 p.m. in the Governor Fifer Courtroom at the Museum. This event is free and open to the public, but donations to the Museum of History are encouraged.

McLean County residents were very involved with wine production in the 1800s. The wines which were produced (usually by families or small businesses) were rarely sold outside of the county, but at one time, the grape vines were sold to backyard grape growers and home winemakers in the West. Local residents like Dr. Herman Schroeder became well known for the wine they made and the vines which they grew. The tradition of winemaking did not die in the 1800s and has seen a rebirth in Central Illinois in recent years.

The wine tasting will include offerings from Willet's Winery in Manito and other area wineries. Participants will get to sample a variety of red and white wines and maybe even a fruit wine. Registration is required and limited to a maximum of forty people. Registration begins Saturday, December 5, and ends Monday, January 18. To register, contact the Education Department at (309) 827-0428 or via email at [education@mchistory.org](mailto:education@mchistory.org).



This program is made possible in part by a grant from the Illinois Humanities Council, the National Endowment for the Humanities, and the Illinois General Assembly.

A Vietnam vet spends  
an hour in *The Turbulent Times*,  
then another hour at my desk

haranguing past protesters  
before he shrugs the chip  
off his shoulder and leaves.

A flutter of Red Hat  
ladies swoops down  
from *Come and Get It*.

Now they're off to get it  
at a nearby dive. Scratch that,  
I mean restaurant.

Some come for a marriage  
license or to pay a traffic ticket.  
This is no longer the county

courthouse, I explain  
and direct them elsewhere  
to the office they need.

A couple in town from California  
to see their daughter's softball team  
play in a tournament have time to kill.

Two hours later they leave,  
bubbling with praise  
for whoever had the wisdom

and the skill to fill this gem  
with wonderful history.  
They declare a rare find.

I bask in the reflected glory.



## Volunteer Help Wanted

**Education Outreach Volunteers (EOV)** – Education Outreach Volunteers are trained to assist the Director of Education and the Education Program Coordinator with school tours. This is a very flexible volunteer opportunity. You are called to assist as the need arises. The average time commitment is usually two hours. Education volunteers work with children of all ages, but primarily preschool through junior high school. A complete training and all materials are provided.

**Reception Desk Volunteers – Day and weekend shifts needed.** In this position, the volunteer is the official greeter and Museum representative. The reception desk assistant greets visitors, and gives them a brief introduction to the building. They also answer the phone, take messages for the staff, and answer general questions. A complete training is provided. In this interesting position, you meet visitors from all over the world. Reception desk assistants are asked to serve two four-hour shifts per month. The Director of Volunteers and Interns works with your schedule and availability.

**Library Reference Assistants – Day and weekend shifts needed.** In this position, you assist visitors using the library for genealogical and historical research, and perform the regular tasks of shelving books and answering phone calls. A complete training is provided with experienced volunteers and training manual. Library reference desk assistants are asked to serve two four-hour shifts per month. The Director of Volunteers and Interns works with your schedule and availability.

Are you interested in meeting people in an exciting atmosphere and contributing to your community? If so, please contact Mary Anne Schierman, Director of Volunteers and Interns, 309-827-0428 or email: [volunteers@mchistory.org](mailto:volunteers@mchistory.org) to receive information on the volunteer program.

The Museum's volunteer program is sponsored by Country Financial.



## New Exhibit to Open on Birthday of Adlai Stevenson II



On February 5, the Museum will celebrate the 109<sup>th</sup> birthday of Adlai Ewing Stevenson II with the opening of *Stevenson House Treasures*. This new exhibit will feature artifacts in the Museum's collection from the Stevenson House, including family heirlooms, clothing, antique furniture, travel mementos and decorative and political objects collected by various members of the Stevenson family.

The Stevensons were one of Bloomington's most prominent political families of the late nineteenth century. When Adlai E. Stevenson's son Lewis married Helen Davis, the daughter of William O. Davis, two of the richest and most powerful families in Bloomington were joined. Lewis and Helen Stevenson's children, Elizabeth Davis and Adlai Ewing II, would grow up in the house at 1316 East Washington Street. Who they would become as adults was shaped by their upbringing in the home. Join us as we explore the background of this family and see how its history is revealed through the contents of the historic home.

Did you know that the Museum's On The Square Giftshop has a wide variety of suitable gifts for adults and children for the upcoming holidays?

**Come in and check out our stock!**

# Focus on Volunteers

Each year a group of dedicated people come together to prepare for and execute the Museum's largest public outreach event. They are the intrepid Evergreen Cemetery Discovery Walk volunteers. For some, the work began ten months ago as they researched characters for this year's theme *Celebrating Lincoln's Legacy*. Once the research is completed it is copied, read and reread. Two volunteers read the research from the perspective of the tour guide and working with the staff and Illinois Voices Theater Director Judy Brown, write an outline of the important information that needs to be communicated to the visitors without giving the story away.

In the months before the event, student interns inventory and purchase needed supplies. A month before, tour guides receive their materials and begin the memorization process. Our strongest volunteers move truckloads of supplies to the cemetery, and then back at the end of the eight days. Box office assistants greet our visitors and set the tone for the experience. Most of the volunteers return to participate in this event year after year. Collectively this group of volunteers contributed 1,459 hours to make this year's event the most well-attended ever. We salute and thank them.

## 2009 Discovery Walk Volunteers

### Tour Guides

Jim Anderson  
Mary Anderson  
Marilyn Aucutt  
Sean Boston  
Kathe Conley  
Mike DeVore  
Karen Fleming  
Carol Fox  
Denise Fries  
Diane Hawk  
Kay Hendrichs  
Jana Kiefer  
Daniel Locke  
Nola Marquardt  
Mary McClintock  
Amy Miller  
Judith Myers  
Nadine Prall  
Kay Ramseyer  
Robert Scott  
Mary Scott

Vicki Smith  
Carol Straka  
Phylis VerSteegh  
Joanne Weed  
Amy Wiens  
Doug Williamson  
Carolyn Yockey  
Mary Kay Zeter

### Box Office, Stage Hands, etc.

Diana Behnke  
Carl Behr  
Marilyn Freese  
Beth Harroun  
Joann Hart  
Frank Hill  
Mary Rose Hill  
James Keeran  
Chris Kibler  
John Kibler  
Carole Knipp  
Kathy McNiff

Gene Murray  
Marsha Nagy  
Gary Nichols  
Jerry Parsons  
Marcy Parsons  
Joyce Schneider  
Pete Whitmer

**Intern:** Anthony Bowman

**Research volunteers:** Sara Cushing, Nola Marquardt, Bill Kemp, Anthony Bowman, Amy Miller, Judith Myers, Pat Schley, Carol Straka, Candace Summers, Doug Williamson, Mary Alice Wills and Mary Kay Zeter



## The Museum Welcomes the Following New Members

Ms. Ally Catherine Wild  
James and Marcia Nelson  
Mr. Alvin W. Miller  
Susan and John Mendenhall  
Mr. and Mrs. Michael D. McGaughan  
Carol Rogalla

Mr. and Mrs. Mark Rayburn  
Mr. Jim Nelson  
Mr. John F. Collins  
Mr. Terrence Irvin  
Mrs. Louise Hebert  
Marsha Fogarty

Mrs. Penny Allen  
Mr. and Mrs. Willis McCord  
Mrs. Margene Taylor  
Kathy Wood

# Fall Interns Enjoy a Wide Variety of Experiences

The Museum has an excellent internship program which provides hands-on experience for students in a variety of majors who are interested in pursuing museum careers.

With majors in Studio Art and Art History, ISU student **Danielle Jackson** was a perfect fit for the Collections Department. She began with cataloging and updating art-related artifacts, such as crayon portraits and cartoons. This gave her the opportunity to learn the steps for accessioning items into the collection. Danielle is also using her art skills to help develop the *Stevenson House Treasures* exhibit.



*Danielle Jackson*

**Lisa Dretske** is a graduate student in Historical Archaeology at ISU. Her career goal is to work in a museum. She has interned and volunteered at the Kenosha Public Museum and the Evansville Museum of Art, History and Science. She is working in the Museum's Education Department writing character biographies of individuals featured in the *Voices from the Past: Evergreen Cemetery Discovery Walk*. After reading

archival information, along with other pieces of literature, she is accumulating the biographical information of each person's life. The completed biographies are stored in the Library/Archives and posted on the Museum's website. This project has utilized and expanded Lisa's research skills. This information will be used by teachers, students and people in the community interested in local history.



*Lisa Dretske*

As a first year ISU graduate student in history, **Izabel Mecinski** wanted to learn the inner workings of a museum. She is achieving this goal by working in an area that is completely new to her—textiles. Her job consists of writing and updating condition reports for the broad variety of textiles found in the Museum's collection. Izabel is also identifying items to be deaccessioned (the museum term for removing objects from collections). Items are deaccessioned when they have no provenance, are duplicates, or are in extremely poor condition. The expected outcome of her project is to free up some room in the textile storage area, and

improve the quality of data recorded on the Museum's textiles. Izabel is using the knowledge she has gained to plan a hypothetical exhibit of turn of the century women's textiles for a class project.



*Izabel Mecinski*

Studying anthropology and history at Illinois Wesleyan University, **Nicole Wagner** was anxious to gain experience in the museum field. Her internship placed her in the Library/Archives inventorying old copies of *The Pantagraph* and other newspapers dating back to the 1860s. She is organizing these materials, storing them in acid-free paper, and repacking them in boxes. Nicole is learning storage methods and the proper way to handle delicate archival materials.

**Anthony Bowman**, an Historical Administration student at Eastern Illinois University's master's program, is in the final months of completing the requirement of working full-time in a museum for six months. He worked all three weeks of History Careers Day Camp and wore the hats of tour guide, stage-hand and parking assistant at the

— continued on page 7



Nicole Wagner

Evergreen Cemetery Discovery Walk. He has transitioned into the Collections Department. In this position, he is learning the industry-wide database, PastPerfect, and the steps for accessioning items into the collection. His final project will be the development of several flat display cases. In his six months at the Museum, Anthony has participated in a wide variety of experiences to prepare him for work in the field.



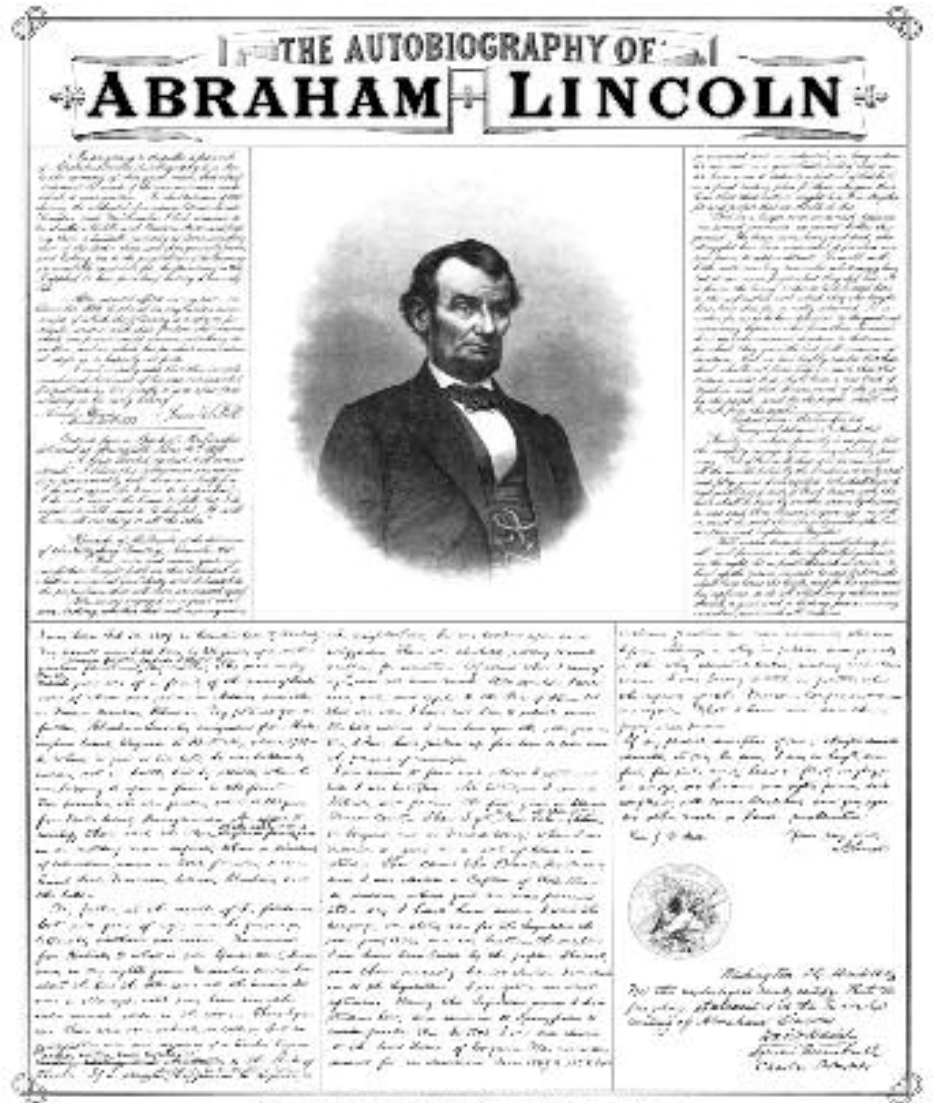
Anthony Bowman

# Holiday Gift Ideas From the Museum's Gift Shop

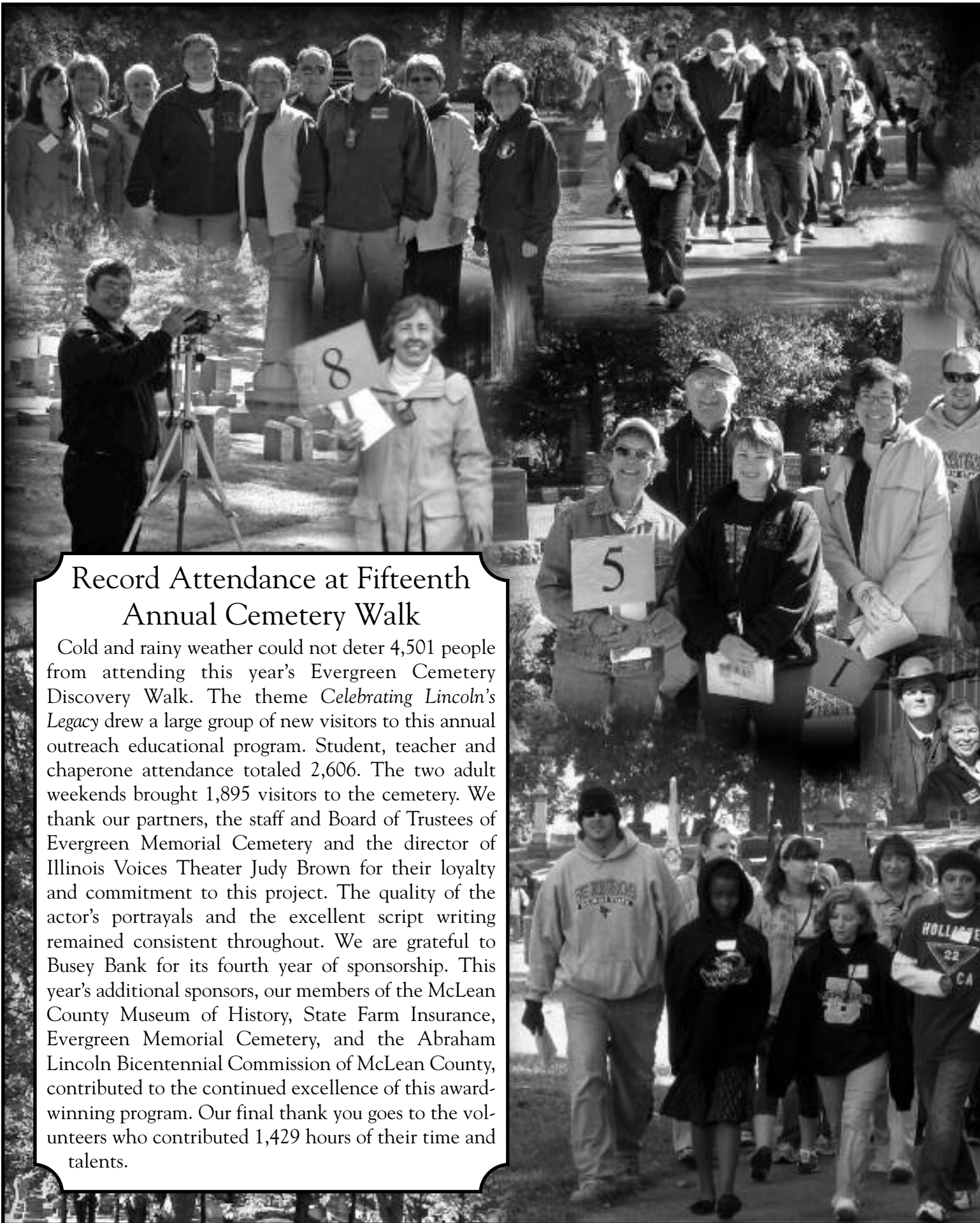
Celebrate the holiday season and the gift of giving by visiting the Museum's On the Square Gift Shop.

The gift shop now has available an Abraham Lincoln Autobiography poster reproduced from an original poster created by Jesse Fell and published by James Rosgood & Co. Boston in 1872. By itself or framed, this poster would make a great gift for all those Lincoln lovers out there, and is selling for only \$5. We also have an array of new postcards including ones showing the Old Courthouse, the Lincoln Bench, Miller Park, the David Davis Mansion and more, all selling for only 50 cents each.

Get your children or grandchildren an Abraham Lincoln storybook or any of our fun activity books. Choose from a variety of gifts such as cookbooks, past-exhibit posters, "I Love History" t-shirts and all the Abraham Lincoln books and materials you could ask for. So come today and see what we have for you!



This Lincoln Autobiography poster, reproduced from one created by Jesse Fell in 1872, is available in the museum giftshop for \$5.



## Record Attendance at Fifteenth Annual Cemetery Walk

Cold and rainy weather could not deter 4,501 people from attending this year's Evergreen Cemetery Discovery Walk. The theme *Celebrating Lincoln's Legacy* drew a large group of new visitors to this annual outreach educational program. Student, teacher and chaperone attendance totaled 2,606. The two adult weekends brought 1,895 visitors to the cemetery. We thank our partners, the staff and Board of Trustees of Evergreen Memorial Cemetery and the director of Illinois Voices Theater Judy Brown for their loyalty and commitment to this project. The quality of the actor's portrayals and the excellent script writing remained consistent throughout. We are grateful to Busey Bank for its fourth year of sponsorship. This year's additional sponsors, our members of the McLean County Museum of History, State Farm Insurance, Evergreen Memorial Cemetery, and the Abraham Lincoln Bicentennial Commission of McLean County, contributed to the continued excellence of this award-winning program. Our final thank you goes to the volunteers who contributed 1,429 hours of their time and talents.



# McLean County Museum of History

## Calendar of Events for December, January, February 2009-10



Through August 7, 2010

### ***A Turbulent Time: Perspectives of the Vietnam War.***

This exhibit explores the complex ways McLean County residents perceived and responded to this crucial twentieth century event. The exhibit poses questions such as: How did the U.S. Government get involved in Vietnam? How did local citizens and those serving in Vietnam initially feel about the war? How did feelings change as the war intensified? And why did U.S. involvement continue, even after anti-war protests escalated and the general public demanded an end?

Opening February 5, 2010 through August 21, 2010

### ***Stevenson House Treasures***

A fascinating exhibit featuring antique furniture, decorative arts, travel mementos, heirloom pieces and political artifacts collected by members of the Stevenson family while living at 1316 E. Washington Street.



Through August 6, 2011

### ***Come and Get It! The Way We Ate 1830-2008.***

This exhibit explores the eating habits, cooking equipment and methods and diverse food traditions of McLean County residents. Investigate four kitchens, each representing a different era and illustrating how the kitchen has changed in the last 180 years. Use the hands-on interactives to better understand where food has come from and how dramatically food sources have changed. Delve into the interpretive panels between the kitchens to see the social and economic changes that have shaped the way we ate from 1830 to the present.

Saturdays until December 26

### ***Come and Give It!***

Every Saturday during the *Come and Get It* exhibit, visitors may donate at least three nonperishable food items in exchange for the admission fee to the Museum. These items will be given to Clare House in Bloomington to help out those in need. Nonperishable food items that can be donated include: High protein items such as canned beans and tuna fish; canned vegetables; fruit and soup; dry cereal; dry beans; macaroni and cheese; and other boxed and canned food items. Please, no expired food items. Thank you for your help and support.

December 5 11:00 a.m. to 4:00 p.m.

**Christmas at the Courthouse: Home for the Holidays.** Join Museum staff for this annual holiday tradition. Enjoy holiday music, caroling, homemade cookies, children's crafts and a multicultural St. Nicholas for the kids. Children can also make holiday cards to send to patients at the Veterans Affairs hospital in Danville.



December 24 and 25  
**Museum Closed for Christmas Holiday**

December 31, 2009 and January 1, 2010  
**Museum Closed for New Years Holiday**

January 21, 2010 7:00 p.m. to 9:00 p.m.  
**History of Illinois Wine Lecture and Tasting**

Join the Museum for an evening of fun, education and wine. Museum Executive Director Greg Koos will present a lecture on the history of winemaking and wine growing in McLean County and Illinois. This event will also include a wine tasting featuring a sampling from Central Illinois wineries. The program will be held in the Governor Fifer Courtroom at the Museum. This event is free and open to the public, but donations are encouraged. Registration is required. See page 3 for more information.



February 6, 2010 1:30 to 2:30 p.m.  
**Stevenson House Treasures exhibit opening program**

Join the Museum for an opening program on the Museum's newest exhibit. The speaker will be announced at a later date. This program is free for Museum members. For nonmembers, the program is included with regular Museum admission (\$5 for adults, \$4 for Seniors 65 and older, and free for students and children). For more information on this and other educational programming, please contact the Museum's Education

## CONGRATULATIONS RENNY AND DAVID!



Congratulations to part-time Museum staffer, Renny McBride, who married David Dockstader on October 31. After the ceremony the entire wedding party posed for a group photo in the rotunda of the Musuem.

# Give the Gift of History!

Each holiday season, most of us know someone who is hard to find gifts for. If that person you know happens to be interested in history or genealogy, a membership to the Museum makes a great gift. This can also be a great way to encourage young people to research their family history.

We will send you a gift membership card that you can either give to the recipient directly or send through the mail. Simply check the "Gift membership" line below and fill it out with the recipient's information, then send it with payment to the Museum. Make sure to fill out your own information too.

## Make a year-end gift to the Museum

This holiday season, please consider making an additional donation to the Museum. Though we have taken some important cost-saving measures this year such as a hiring freeze and an overall budget reduction of 9 percent, we still have a number of challenges facing us in the near future. Your additional gift will go a long way toward ensuring that our service to the community remains unchanged.

Many students, parents and seniors have benefited from, and in some cases have come to rely on, many of the programs we offer free of charge. However, these free programs require many resources to maintain. When making decisions about your year-end giving, please consider including a gift to the Museum. You can return the form below with your gift, or you can donate online at [www.mchistory.org](http://www.mchistory.org) and click the "Donate Now!" button.

Thanks so much for your support!

***Yes! I want to strengthen the educational opportunities in our community by giving a membership in the McLean County Museum of History!***

<input type="checkbox"/> Lincoln Club	\$1000	<input type="checkbox"/> Yes, I would like to make a year-end gift to the Museum
<input type="checkbox"/> Stevenson Club	\$750	
<input type="checkbox"/> Fifer Club	\$500	Check / Cash / Credit Card (circle)                      Visa    MC
<input type="checkbox"/> Fell Club	\$250	Card # _____ Exp. _____
<input type="checkbox"/> Davis Club	\$100	Dr./Mr./Mrs./Ms./Miss/Mr. & Mrs. (circle)
<input type="checkbox"/> Allin Club	\$50	Name _____
<input type="checkbox"/> Primary Club	\$30	Address _____
<input type="checkbox"/> Students/Seniors	\$15	City _____ State _____ Zip _____
<input type="checkbox"/> \$ _____ Other amount enclosed		Email _____

(used only for Museum announcements)

Yes, please send a gift membership to the name listed above.

Gift membership recipient's contact info:

Dr./Mr./Mrs./Ms./Miss/Mr. & Mrs. (circle)

Name \_\_\_\_\_

Address \_\_\_\_\_

City \_\_\_\_\_ State \_\_\_\_\_ Zip \_\_\_\_\_

**Mail completed forms to:**  
**McLean County Museum of History**  
**200 N Main St**  
**Bloomington, IL 61701**

# New to the Collections

## OBJECTS

- ❑ Tilden Hall hotel plate; donated by Donna Eichstaedt.
- ❑ Window service flag and sign for Donald E. Yoder, WW II; donated by Margaret Stocker.
- ❑ Rod Blagojevich t-shirt; donated by Mike Matejka.
- ❑ 1950s poker chips; Dewey for President fan; donated by David Beich.
- ❑ Old coins found by Anthony Koos, clip-on sunglasses, c. 1964; donated by Greg Koos.
- ❑ Meadows Mfg. mangle; donated by Ann and Chris Godsey.
- ❑ Lydia Lenze Meyers' 1880s bonnet, 2 purses, pyrography box made in 1907, necklace and gloves, Edward Meyers' hand mirror; donated by Eldon and Carolyn Mehlberg.
- ❑ Schneider bakery box; donated by Michelle Meadows for the estate of Glenn Myers.
- ❑ 1985 drawing of proposed downtown Bloomington Lincoln Park as conceived by donor; donated by Rick Garber.
- ❑ Lawrence Irvin's Stevenson campaign buttons, Nazi armband collected during WWII by Lawrence Irvin, Kerry Edwards button, Adlai III sterling token; 6 pack Pepsi cans; donated by Terry Irvin.
- ❑ book, includes St. Joseph's Hospital birth certificate, 1945; by Greg Koos.
- ❑ St. Mary's Catholic Church, Bloomington, membership directory, 1975; by Vicki Hetman.
- ❑ Barack Obama inauguration packet, January 20, 2009, includes program, invitation and ticket; by Normal Mayor Chris Koos.
- ❑ History booklet, show program and *Pantagraph* article on Sound of Illinois Chorus 50th annual barbershop show, 1992; by James A. Stahly.
- ❑ Various, including program for dedication of the Wroan Engineering and Technology Center, University High School, 2009, and 1964 TV viewers guide to national political conventions; by Robert Neuleib.
- ❑ Nine scrapbooks with photos, Delphi women's organization, Bloomington chapter, and meeting minutes, 1938; by Ruth Mangina.
- ❑ Babbitt's Closet, Normal, advertising card, and Centennial School, Bloomington Junior High, and Bloomington High material, 1984-1987; by Kathy L. Philpott.
- ❑ Collection of material on the Ladies Auxiliary to the VFW, World War I, Post No. 1097, including ledger books, membership lists, newspaper articles and original charter; by Kim Goben.

## ARCHIVES

- ❑ Spencer / Ewing family Bible; by Vilma and Lionel Kinney.
- ❑ Booklet, "The Constitution of the United States," distributed by William B. Brigham, county schools superintendent, ca. 1940; by Ilene R. Beach.
- ❑ Robert Anthony Koos baby

In 1900 Carlock's Sutzman and Esch Grocery Store offered its customers fresh baked bread. The bread was delivered daily by Bloomington's J.A. Schneider Bakery via horse and wagon and placed inside the bakery's special box in front of the store. The Museum recently received this great piece from Michelle Meadows, the great-granddaughter of Ulysses Grant Stutzman, who started the grocery in 1888.



Schneider Bakery box, circa 1900

- ❑ Scrapbook and miscellany detailing travels, 1948-1965, of Ida Reeder, retired State Farm nurse; by Vicki Shroyer.
- ❑ Letter, March 23, 2000, historian John Hope Franklin to Mildred Pratt, and booklet, "For Better, For Worse," by Aurelia Elizabeth and J.H. Franklin; by Mildred Pratt.
- ❑ Junior Woman's Club, Bloomington, membership booklets, 1953-54, 1954-55, and 1957-58; by Mr. and Mrs. Jewel Schalk.
- ❑ Collection of corporate

## Lawrence Irvin Collection Donated

In early October, Terry Irvin made a significant donation of material detailing his father's long and productive career in public service. Lawrence Irvin, the son of west side coal miner Patrick J. Irvin, served as administrative assistant to Adlai E. Stevenson II during his four years (1949-1953) as Illinois governor. Irvin worked closely with Stevenson in handling personnel recruitment and political liaisons. Much of the material donated, including a large number of photographs (such as this one), related to Irvin's time in state government.

In 1953, after Stevenson's unsuccessful run for president, Lawrence Irvin became the head of the Bloomington Housing Authority, a post he kept for 32 years. He was also an active member of the Human Relations Council, a member of the National Association for the Advancement of Colored People (NAACP), and the 1985 recipient of the local Dr. Martin Luther King Award. Irvin passed away on June 27, 1994. Ironically, Elizabeth "Buffie" Stevenson Ives, sister of Adlai Stevenson, died on the same day.

Son Terry Irvin had previously donated material from his father. This most recent gift is an addition to the existing Lawrence E. Irvin Collection.



Bob Hope and Adlai E. Stevenson II seen here in an undated photograph taken at the Governor's Mansion in Springfield. Hope was scheduled to perform at the Illinois State Fair.

- papers, Steak n Shake, 1954-1969, report cards of Ray Smith, and bound book containing correspondence between Judge William Radliff and his daughter Rosanne Radliff Smith, 1944-1952; by Suzie Zeigler and M&J Sales.
- ❑ Large collection of items, including correspondence and political campaign material, local, state, and national, relating to Lawrence Irvin, who served as administrative assistant to Adlai E. Stevenson II; by Terry Irvin.
- ❑ Typed personal recollections of Great Depression and McLean County Coal Co.; by Eugene L. Osman.
- ❑ Topographical maps, 1981, of McLean County; by the M.E. Tyner estate.
- ❑ "Lincoln's In Town!" historical pageant material, including program, script and DVDs; by McLean County Lincoln Bicentennial Commission.
- ❑ Collection of nearly 100 local menus, most from Bloomington County Club and Luca Grill, and Conklin Dinner Theater material; by Priscilla Blakney.
- ❑ Campaign portrait of Adlai E. Stevenson I, and cover of "Judge" magazine, 1892, featuring Adlai E. Stevenson I; by Adlai E. Stevenson III.
- ❑ Additions to the Mrs. James Hamm Collection, including abstract of titles, daily ledgers, and real estate papers; by Barbara Gurtler.
- ❑ Research material on Charlotte FitzHenry Robling, posthumous 2009 Distinguished Alumnus, University High School; by William R. Miller.

## BOOKS

- ❑ *Trinitas*, Trinity High School, 1948 yearbook; by Vicki Hetman.
- ❑ Two volumes (1993-2003 and 2004-2008) of *The Barber Post*, weekly publication of the Bloomington chapter of the Barbershop Harmony Society; by James A. Stahly.
- ❑ Various cookbooks, including *Christianity in the Kitchen* (1857) by Mrs. Horace Mann, *The Book of Corn Cookery* (1918) by Mary L. Wade, and others, and *Twenty Years Among the Mexicans, A Narrative of Missionary Labor* (1881) by Melina Rankin; by Greg Koos.
- ❑ *Trinitas*, St. Mary's High School, 1927 yearbook, and *Trinitas*, Trinity High School, 1929 yearbook; by Terry Irvin.
- ❑ *Prisoners Who Died at Andersonville Prison* (1981); by Nadine Reining.
- ❑ June 1938; by Mike Kerber.
- ❑ Scrapbook containing large collection of 8x10 black-and-white photos of McLean County centennial parade, 1930, owned by event chairman Babe Smith; by Kevin R. Smith.
- ❑ Three photos, including 5x7 of Christmas party, 1917, at White's Place, and 8x10 of Women's Foreign Missionary Society, 1907-1908; by Jane Bolger.
- ❑ Collection of photos, primarily 8x10 black-and-whites, of Adlai E. Stevenson II campaign scenes; by Adlai E. Stevenson III.
- ❑ Arthur "Babe" Smith with Adlai E. Stevenson II and sister Elizabeth "Buffie" Ives; by Suzie Zeigler and M&J Sales.
- ❑ Large collection Adlai E. Stevenson II and Stevenson-related photos, held by Lawrence Irvin, Stevenson confidant and administrative assistant; by Terry Irvin.

## PHOTOS

- ❑ Telephone Operators Local #78, spring formal,

To make donations of photographs, books or archival materials call the Museum's Librarian/Archivist, Bill Kemp. If you have objects you wish to donate to the collection call the Museum's Curator of Collections, Susan Hartzold. Both can be reached at the McLean County Museum of History, 827-0428.

## Cemetery Walk Staff Present at State Conference

Director of Education Candace Summers and Director of Volunteers and Interns Mary Anne Schierman were co-presenters at the Illinois Association of Museums (IAM) conference which was held in Bloomington-Normal in October. The theme for this

year's conference was "Putting the Pieces Together for Life-Long Learning." Museum professionals from throughout Illinois were attendees.

Candace and Mary Anne's presentation was a three-hour "how-to-lab" on creating and implementing a cemetery walk program. During this workshop, they shared their expertise on how to successfully plan, prepare and implement a cemetery walk event that can fit the needs of any size community or organization. They were joined by Judy Brown, artistic director of the Illinois Voices Theater; Carol Straka, veteran *Evergreen Cemetery Discovery Walk* tour guide and research volunteer; and Kathleen Kirk, veteran performer and script

writer. These women contributed their insight and expertise from the perspectives of a writer, director, actress, researcher and volunteer.

Conference attendees received a complete manual outlining all of the steps in the process of creating a cemetery walk, copies of promotional materials used for the event, and a copy of this year's playbill. The workshop was held on the beautiful grounds of Evergreen Memorial Cemetery and attendees were able to see a performance of one of this year's characters. Feedback from those who attended the workshop was very positive. All attendees found this presentation to be a benefit in some way to their organizations.





## Mystery History

Last issue's photograph was taken from Benjaminville Cemetery with one of the Twin Grove Wind Farm turbines looming in the background. This cemetery, located northeast of Ellsworth, is also known as Friends because it's on the grounds of a Friends or Quaker meeting-house. The photo was taken by Museum Board member Mike Matejka on a clear evening this summer.

Those history sleuths who correctly identified the location include Gene Drager, the mother-and-daughter duo of Jan and Denise Fries, Pat Littlefield and Marie O'Brokta. Another positive ID came from Jim Raymond, who remembers visiting a store in Bentown in the 1950s "to buy candy, and listen to the parrot, or some kind of bird that talked."

## MYSTERY HISTORY QUIZ

Can anyone tell us a little something about this photograph? You might not know the "who, what or where," but you might be able to deduce the "why." In other words, can you tell us why these people are dressed so outlandishly? What was the historic event that prompted this gathering?



ADDRESS SERVICE REQUESTED

ADDRESS SERVICE REQUESTED



200 North Main Street  
Bloomington, IL 61701  
Phone: 309-422-0428  
www.McHistory.org

McLEAN COUNTY  
MUSEUM  
OF HISTORY

Non-Profit Organization  
U.S. Postage  
**PAID**  
Bloomington IL 61701  
PERMIT NO. 118